

SHIP – Development of the National Safe Haven

Stephen Pavis
Janet Murray

A large, light blue wavy graphic that curves across the bottom of the slide, starting from the left and ending on the right.

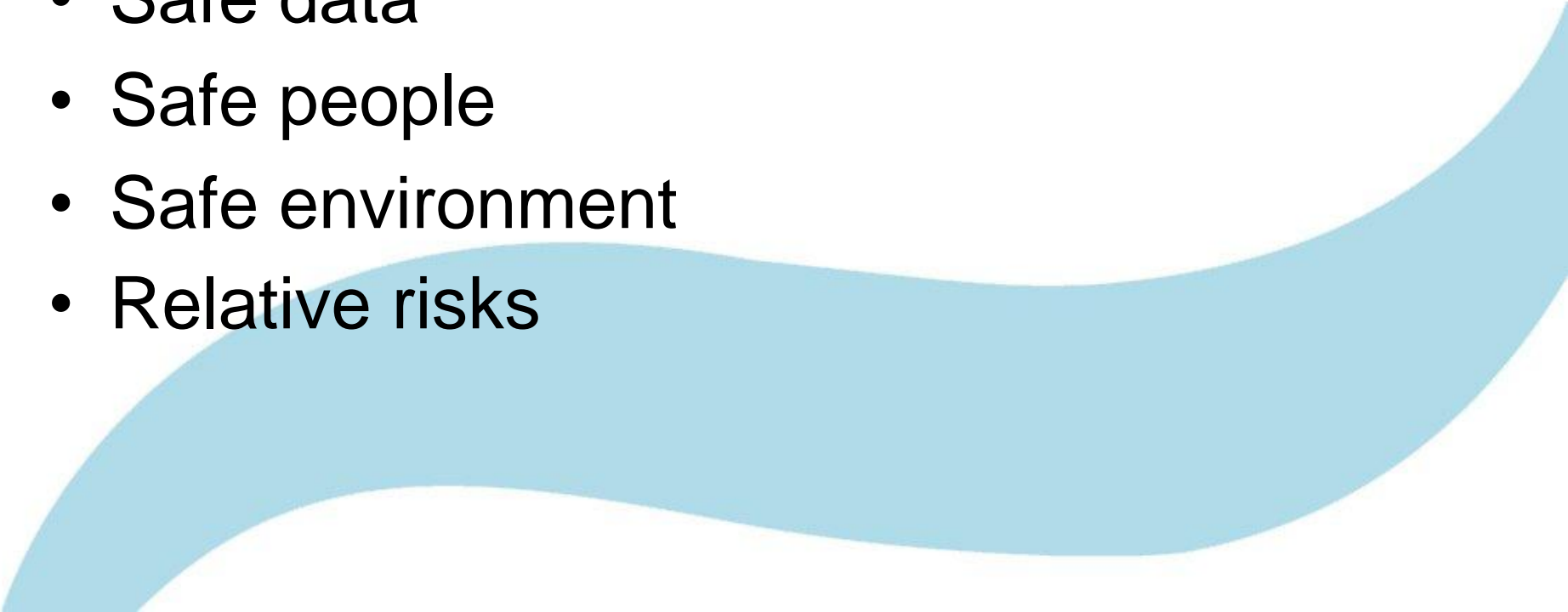
Structure of the talk

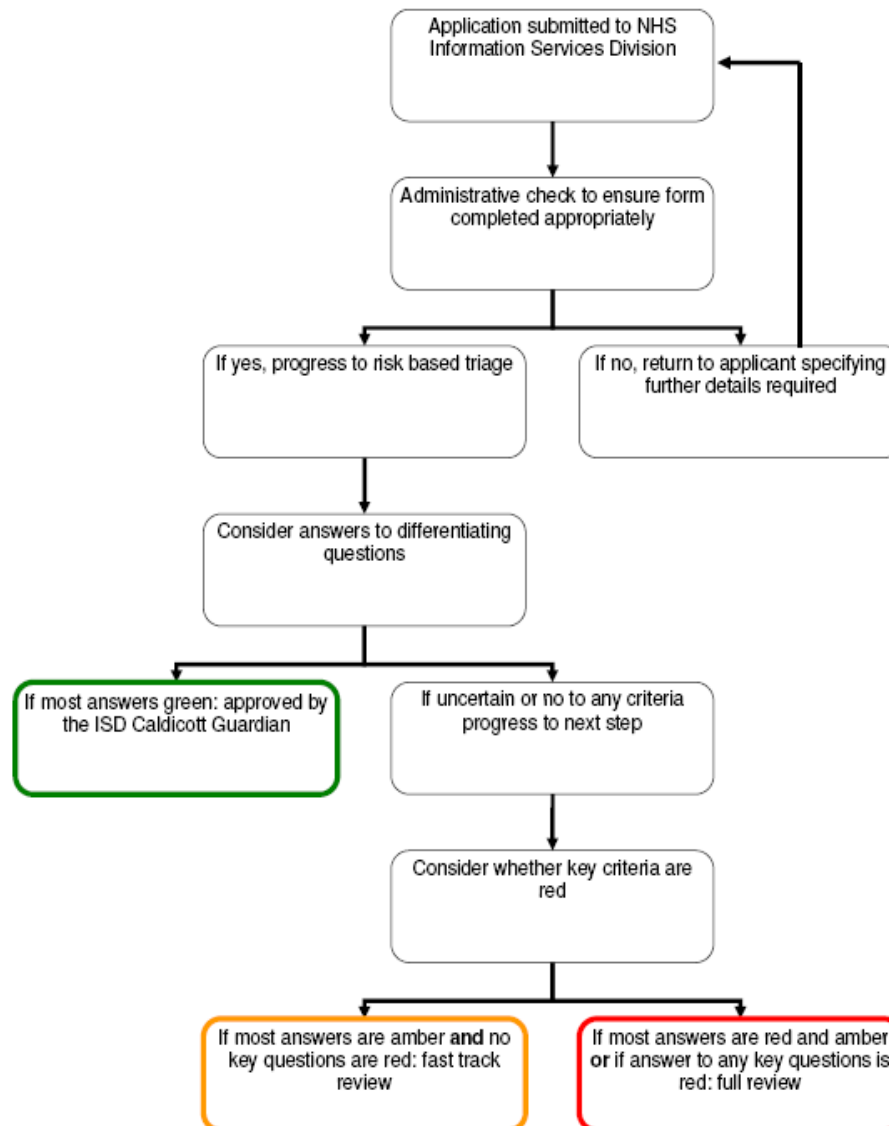
- Proportionate governance (JM)
- Procurement of National Safe Haven IT infrastructure (SP)
- Launch of the National Safe Haven (SP)

Proportionate governance: Individual privacy and public interest

- Understanding objectives, data required, privacy risks and mitigation
- Ensuring legal and professional compliance
- Obtaining lay opinion regarding balance

Proportionate governance: Level of risk and intensity of governance

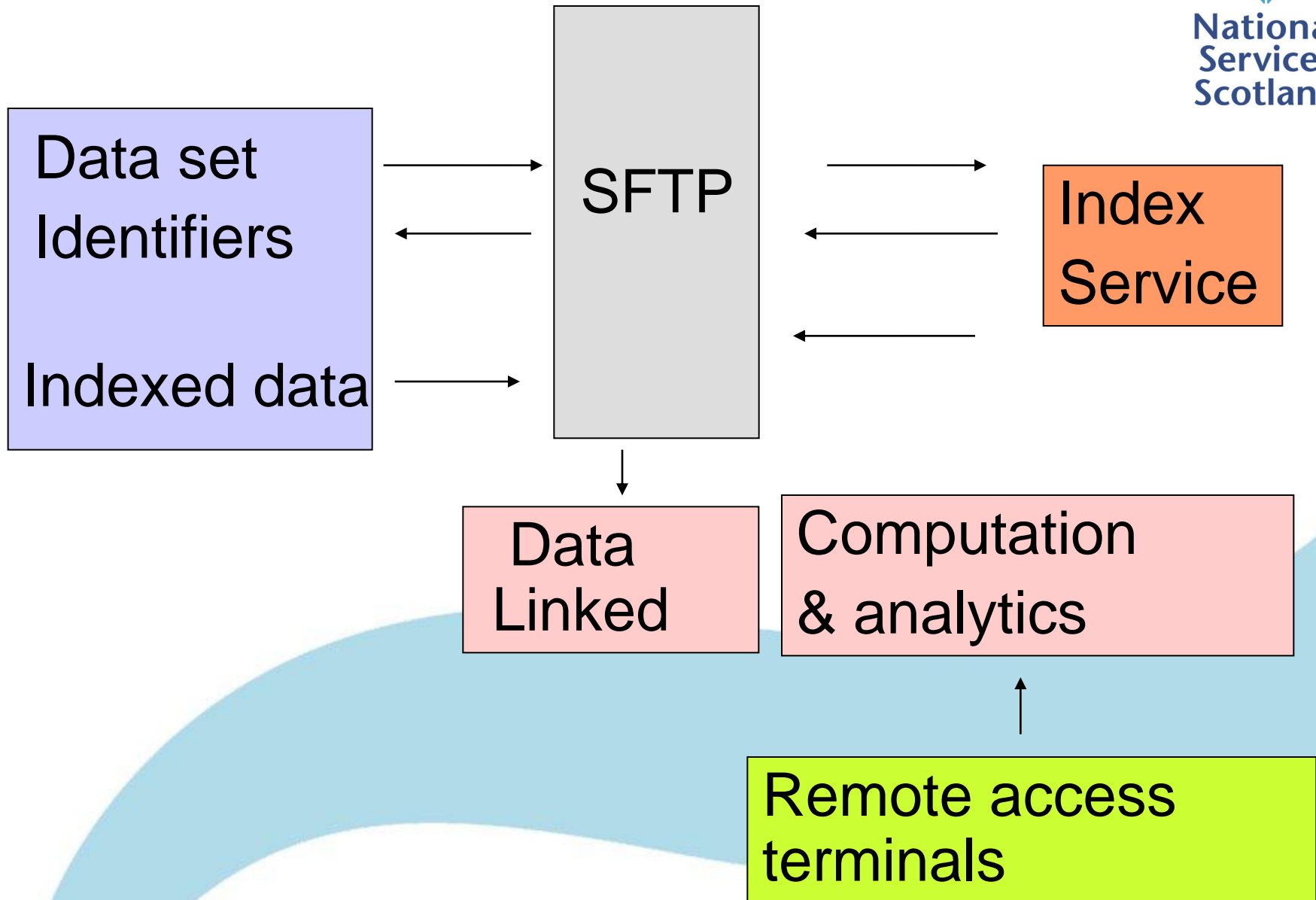
- Public interest
 - Safe data
 - Safe people
 - Safe environment
 - Relative risks
- 
- A large, light blue, wavy graphic element that starts from the bottom left and curves upwards towards the right, partially overlapping the bottom of the list.



Implementation

- Revise application form
- Inform research community
- Refine definitions to enable standard assessment
- Ensure adequate resource
- Liaise Scottish Caldicott Guardian Forum

National Safe Haven IT Infrastructure



Secure file transfer protocol

- Provides a way to transfer data between secure networks (eg NHS, SG, LA, Universities)
- Web based secure drop zone that requires both password and pin for use
- Technical design by ATOS currently with NSS security experts for agreement

Indexing Service

- Automated system which uses CHI index to allocate a unique index number to each study subject
- CHI is not released only the Index number
- Additional option of clerical review for when 'false positives' are unacceptable
- This service is now in place

Linkage, computation and analytics (1)

- Performance must be right !
- Cross disciplinary expert workshop held on May 10th (Harvard medical school, Sanga Institute, IBM, ATOS, Scottish academic experts)
- IBM Netezza purchased
- Multi-blade parallel processor—specification being determined

Linkage, computation and analytics (2)

The service must be affordable and sustainable!

- Business case developed by Scottish Enterprise
 - estimation of demand
 - costing model (to provide and develop service)
- NSS are currently reviewing the costs and sustainability – 4 year contract with ATOS envisaged

Accessing Data

- Mode of access determined by data controllers
 - data export
 - remote access terminals (Citrix via N3 connection)
- ~70 concurrent users
- 300 studies per year
- NSS and HSS will provide access terminals
- Other institutions will also be able to create dedicated terminals

Advice and Support Service

- Research coordinators
 - single point of contact
 - approved researcher status
 - datasets
 - permissions
 - statistical disclosure control
- Probabilistic matching
 - poor data quality
 - few or no identifiers

When will it happen ?

- AOA require 12 weeks to put the linkage and IT infrastructure in place (after contract signed)
- ISD will then need to test the environment and run some pilot projects
- Estimated go live date November 2012